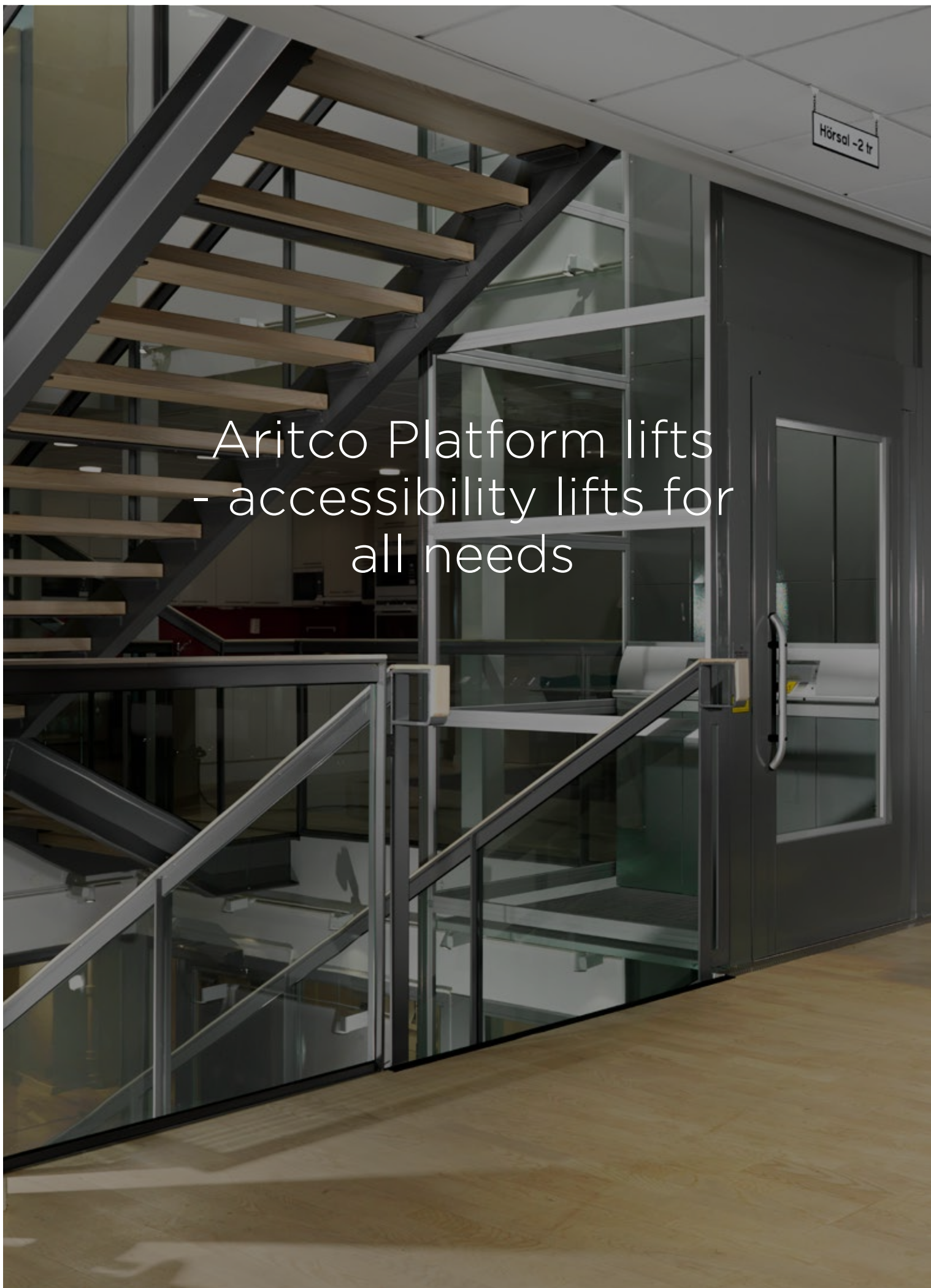


Product catalogue
Aritco 7000, Aritco 9000

2018

Hörsal -2 tr

Aritco Platform lifts
- accessibility lifts for
all needs



Product summary | Aritco 7000

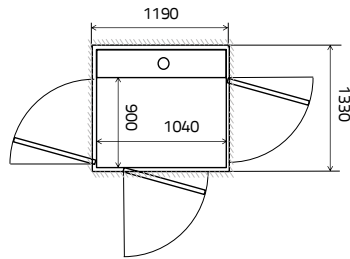
Aritco 7000 - our bestselling platform lift

The lift is designed to meet all requirements for quality, safety and service life. It is a perfect fit for tough and demanding environments such as schools, shops and residential buildings.

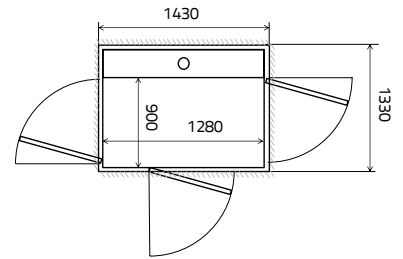
Aritco 7000 is available in 8 different platform sizes. The rated load depends on the platform size. For detailed drawings see page 42.

Aritco 7000	
Technical compliance:	European Machine directive 2006/42/EC European standard EN 81-41
Lift type:	Platform lift
Drive system:	Patented screw/nut system
Rated speed (max):	0,15 m/s
Travel height:	250 -13 000 ¹⁾ mm ¹⁾ Travel height when having a half door is maximum 3 000 mm (inside EU)
Number of stops:	Max. 6 stops per lift
Number of doors:	Max. 6 doors per lift
Number of doors per floor:	Max. 2 doors per floor
Pit:	50 mm (no pit is required when there is a ramp)
Entry:	One, two or three sides
Top height:	Minimum 2240 mm (1100-1600 mm with half height door)
Platform control:	"Hold to run", the destination button must be kept pressed down during the whole ride
Landing control (on door):	One-touch call
Environment:	Indoor/outdoor
Emergency lowering:	Battery operated emergency lowering
Control voltage:	24V
Motor:	2,2kW
Power supply:	1-phase 230V 50 Hz/9 A/16 A slow 3-phase 230V 50 Hz/9 A/16 A slow 3-phase 400V 50 Hz/5.2 A/16 A slow
Rated load:	250, 410 or 500 kg (depending on platform size)

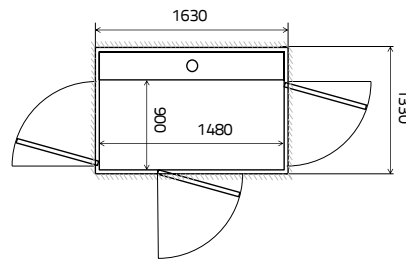
Load limits per power supply	400V 3-phase 50Hz	400V 3-phase 60Hz	230V 3-phase 50Hz	230V 3-phase 60Hz	230V 1-phase 50/60Hz
250 kg	•	•	•	•	•
410 kg	•	•	•	•	•
500 kg	•		•		



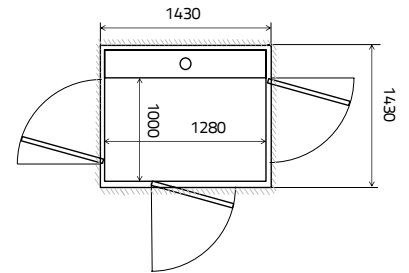
Size: 900 x 1040 mm
Rated load: 250 kg / 2 pers.
Wheelchair: -



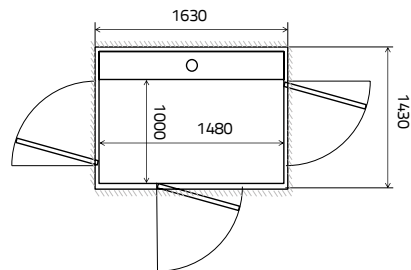
Size: 900 x 1280 mm
Rated load: 410 kg / 5 pers.
Wheelchair: Lone user or type A*



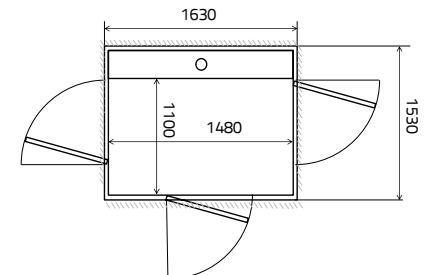
Size: 900 x 1480 mm
Rated load: 410, 500 kg / 5, 6 pers.
Wheelchair: A or B with attendant*



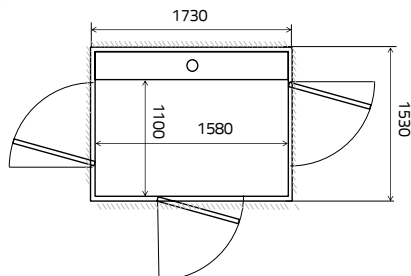
Size: 1000 x 1280 mm
Rated load: 410 kg / 5 pers.
Wheelchair: Lone user or type A*



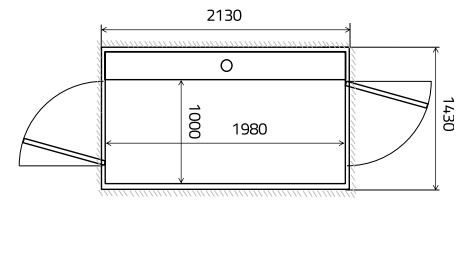
Size: 1000 x 1480 mm
Rated load: 410, 500 kg / 5, 6 pers.
Wheelchair: A or B with attendant*



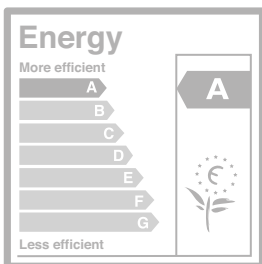
Size: 1100 x 1480 mm
Rated load: 410, 500 kg / 5, 6 pers.
Wheelchair: A or B with attendant, adjacent entry*



Size: 1100 x 1580 mm
Rated load: 500 kg / 6 pers.
Wheelchair: A or B with attendant, adjacent entry*



Size: 1000 x 1980 mm
Rated load: 500 kg / 6 pers.
Wheelchair: A or B with attendant*



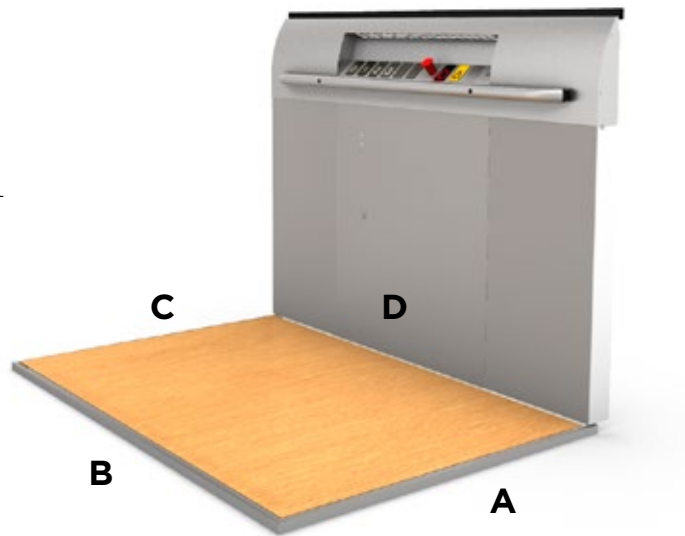
* National guidelines may apply. Wheelchair Type A and B according to EN 12183/EN 12184.



Carrier

Half height wall

The platform is in its basic execution delivered with a side wall (half height) including the destination panel. Panels under the destination panel are painted in RAL 7042 (grey) as standard, but can be painted in any RAL colour as an option. Height 1100 mm.



A,B,C and D-side of platform.



Full height wall

As an option the platform can be delivered with a full height wall (2100 mm high) with a mirror. The full height wall is in RAL 7042 (grey) as standard, but can be painted in any RAL colour as an option. The full height wall is available for D-side of 1480 mm, i.e for platform sizes 900x1480 mm, 1000x1480 mm and 1100x1480 mm.

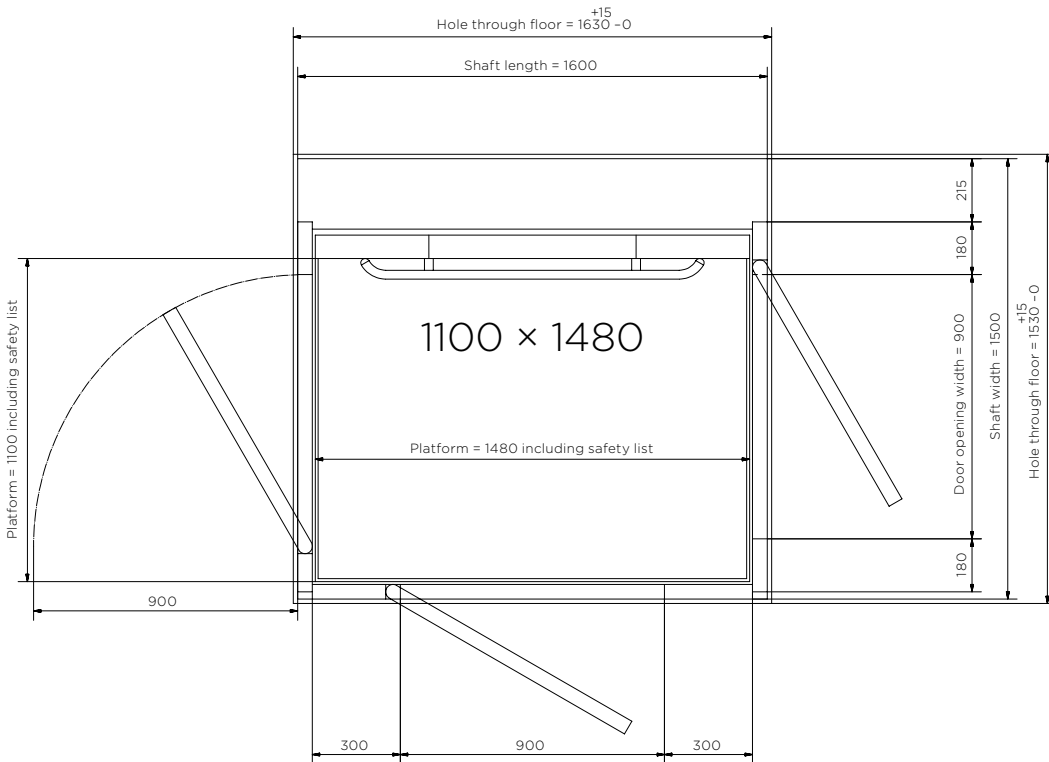
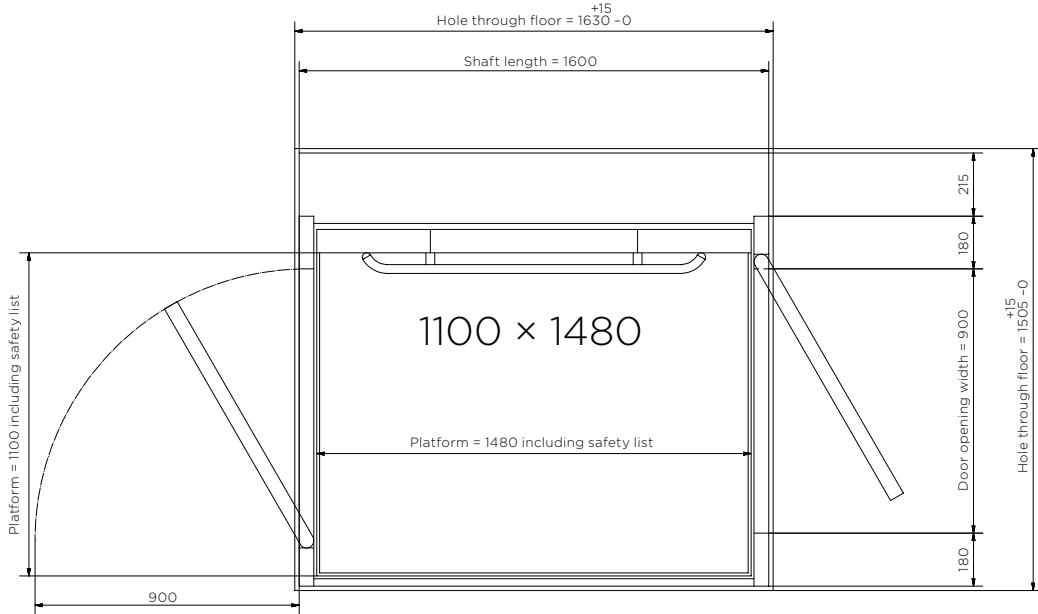
Note also that full height wall is not possible if you have a lower door opening height than 2000 mm or having a half height door.

Fold down seat

In solid birch and with chromed brackets. The seat has to be folded back manually after use. Can be ordered as an option. Size: 320 x 400 mm. Not available for 900x1040.



Platform 1100 × 1480



FAQ



1. Can I have the lift painted in any colour?

Both Aritco 7000 and Aritco 9000 can be painted in any RAL colour or in Metallic colour Silver.

Following choices are available:

Whole lift painted in standard colour RAL 9016 (Traffic white):

- Whole lift painted in RAL 9016 (For Aritco 7000 the platform panels are painted in RAL 7042 (Grey).

Whole lift painted in other colour:

- Whole lift painted in optional colour (Incl. shaft, doors and platform panels for Aritco 7000.)

Lift partially painted in different colours:

- Shaft in one colour (Incl. shaft panels, corner profiles, Architraves, etc.)
- All door blades in one colour.
- All door frames in one colour (Also includes the door faceplate.)
- Platform panels in one colour - valid for Aritco 7000 only.
- One of the above choices or a combination of them.

Note that all doors must be painted in the same way. It is not possible to paint them differently.

The paint is a soft textured powder coat with a matt surface (gloss level 12).

Any RAL colour means in this case any RAL color from the 213 colour RAL chart K7 classic.

Common colours:

RAL 1015	RAL 7045	RAL 9007
RAL 3020	RAL 7047	RAL 9010
RAL 5002	RAL 8017	RAL 9016
RAL 7012	RAL 9005	
RAL 7016	RAL 9006	

Shorter lead time and lower price

Other colours:

Rest of the colours from RAL chart K7 classic. Longer lead time and higher price.

Note that only Metallic colour silver, gloss 100+/-5% is available for sale.

Note: the EI60 door can't be painted in Metallic colour Silver.

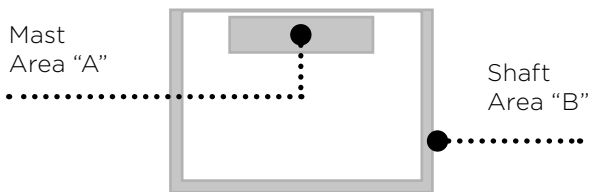
4. What are the reaction forces on the building and force on fixings to support frame to wall?

Details regarding the forces are available in the installation manual for Aritco 7000 and Aritco 9000.

Aritco 7000

Reaction forces from the lift to the building:

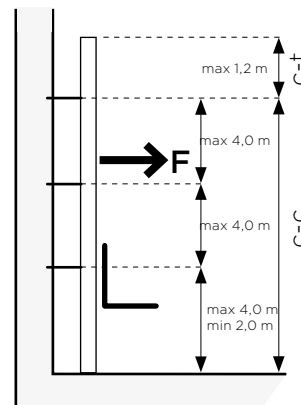
- Maximum force as a function of the lift’s travel. The force is distributed to the floor through the mast bottom with the area “A” and to the shaft bottom with the area “B”.



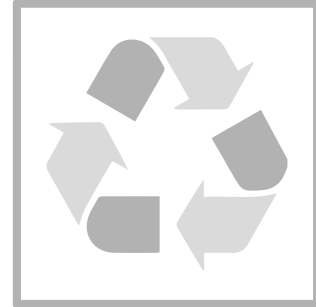
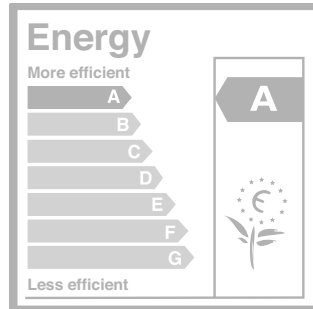
Travel height (m)	Area “A” F(kN)	Area “B” Shaft panels F(kN)	Area “B” Glass Shaft F(kN)
1	7,8	2,55	3,30
2	8,5	3,40	4,40
3	9,2	4,25	5,50
4	9,9	5,10	6,60
5	10,7	5,95	7,70
6	11,5	6,80	8,80
7	12,0	7,65	9,90
8	12,8	8,50	11,00
9	13,4	9,35	12,10
10	14,2	10,20	13,20
11	14,9	11,05	14,30
12	15,6	11,90	15,40

Force on fixing to support frame (mast) to wall:

- c - c = distance (height) from the floor to the highest fixing into the wall.
- The maximum distance between two fixings or lower floor and the lowest fixing is 4,0m.
- The minimum distance between lower floor and the highest fixing is 2,0 m.
- c - t = distance from the top of the mast to the highest fixing into the wall.
- The maximum distance between the top of the mast and highest fixing is 1,2 m



Features and benefits



EASY INSTALLATION

- Means that the lift is both easy and fast to install. A normal installation only takes two days.

LOW ENERGY CONSUMPTION

- Minimum stand-by power consumption 15 W - not more than a computer or a TV.
- Energy class A as per VDI 4707.

Environmental Product Declaration

- We are the first lift manufacturer with an Environmental Product Declaration
- More than 95% of the parts are recyclable.

LOW OPERATION AND MAINTENANCE COST

- Lowest on the market.

NO HYDRAULICS, WHICH MEAN NO LEAKAGE OR SMELL

- No additional space needed for hydraulic unit.

MINIMUM BUILDERS WORK AND SMALL FOOTPRINT

- The lift can be installed without a pit, with a ramp (or with a 50 mm pit without ramp).
- All parts are included in the shaft - no extra machine room or head room needed.

ROBUST SHAFT

- 25 mm shaft panels. Robust and resistant to damage.
- Good noise and acoustical isolation.

THE LIFT CAN'T FALL DOWN

- With the self locking concept, i.e the friction between screw and nut will prevent the lift from falling down. No additional brake system is needed.

YOU CAN ALWAYS GET OUT OF THE LIFT BY YOURSELF

- If there is a power failure, you can always get out of the lift by yourself with battery operated emergency lowering. Use the platform buttons and the lift will take you to the closest lower floor and you can open the door and get out by yourself.

Aritco is a world-leading manufacturer of platform lifts and home lifts. Aritco produces two types of lifts; home lifts for the private residential market and platform lifts for the public accessibility market.

Read more at aritcoplatformlifts.com

Aritco certified partner:

